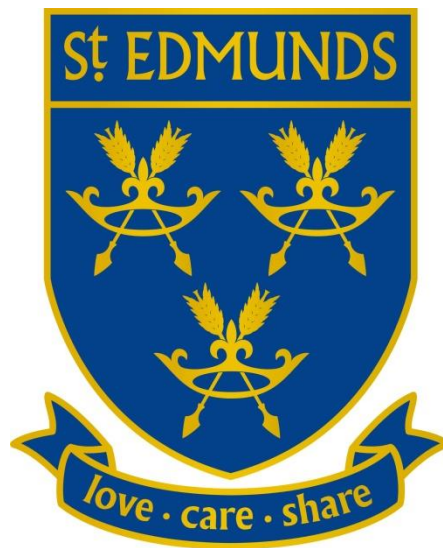


---

# **St Edmund's Catholic Primary School**



## **Anaphylaxis Emergency Medication Policy**

**September 2022**

## Mission statement

To Love, To Care, To Share

St. Edmund's Catholic Primary is a community of faith where we aim to keep Christ at the center of everything we do. We celebrate the uniqueness of every individual nurturing them to achieve their full potential. Our understanding and experience of the love of God grow through our way of living, behaving, learning, and teaching, which is inspired by Jesus.

Our Mission Statement encapsulated in "To Love, Care, Share", along with our Catholic values and the teaching of the Catholic Church, underpin the values of this policy.

## Context

From 1 October 2017 the Human Medicines (Amendment) Regulations 2017 allow all schools to buy adrenaline auto-injector (AAI) devices without a prescription, for emergency use in children who are at risk of anaphylaxis but their own device is not available or not working (e.g. because it is broken, or out-of-date). **The school's spare AAI should only be used on pupils known to be at risk of anaphylaxis, for whom both medical authorisation and written parental consent for use of the spare AAI has been provided. The school's spare AAI can be administered to a pupil whose own prescribed AAI cannot be administered correctly without delay.**

This policy has been written in line with information provided by the Guidance on the use of adrenaline auto-injectors in schools (Department of Health, 2017), and Supporting pupils at school with medical conditions: statutory guidance for governing bodies of maintained schools and proprietors of academies in England (Department for Education, 2014) and the schools' health service.

St. Edmund's Catholic Primary School is an inclusive school that supports children with medical conditions in all aspects of school life and encourages them to achieve their full potential.

This will be done by:

- Having a policy in place that is developed in conjunction with the local authority and understood by all school staff.
- Ensuring relevant support staff (including new staff) regularly receives training about anaphylaxis and administering emergency medicine.
- Ensuring information and records are shared appropriately.

## **What to do when a child with anaphylaxis joins St. Edmund's Catholic Primary School?**

When a child with anaphylaxis joins St. Edmund's Catholic Primary School, or a current pupil is diagnosed with the condition, the SENCO will arrange a meeting with the parents, class teacher, school nurse (if applicable), and the welfare assistant, to establish how the pupil's anaphylaxis may affect their school life, e.g. their learning, social skills, and out of school activities. Any special arrangements the pupil may require will be discussed, e.g. extra time in exams/tests, any additional staffing support, or implications of care on school trips.

### **Record Keeping**

When joining the school (in Reception or any other time), parents/carers are asked if their child has any medical conditions including anaphylaxis/allergy during the enrolment process. A record of pupils with anaphylaxis and allergy is kept in the Welfare office and information shared with relevant staff.

During the initial meeting, an individual care plan will be drawn up, usually by the welfare assistant, school nurse, SENCO, and the parents. The SENCO may request further documentation/reports provided by the nurse to complete a record of the pupil's condition and learning and health needs. This individual care plan will be agreed by the parents, and the health professional, if present, and signed by the parents and SENCO. This form will be kept safe and updated every year and when necessary. Parental approval to use emergency AAI will be sought via the care plan draft and review process.

Use of the emergency AAI will be recorded and parents/carers informed. This will include where and when the attack took place (e.g. PE lesson, playground, classroom), how much medication was given, and by whom.

### **Medicines**

After the individual care plan has been completed, the school will identify further training if needed to meet the individual needs of the pupil. This may include a specialist training session with the school nurse, who will go through the individual care plan and emergency medication in-depth with the class team and any other adults who work closely with the pupil.

The individual care plan will include parent/carer consent for trained members of staff to administer emergency medicines such as an AAI and it will identify any first aid issues of which staff needs to be aware.

See the First Aid Policy for trained first aiders.

The emergency AAI medications will be stored in a secured bag, with instructions on when to use them (see appendix2), in the welfare office cupboard, which is easy to access in case of an emergency.

## **First Aid**

The following procedure is followed to give basic first aid for allergic reaction/anaphylaxis:

1. Adult to remain with the child all time
2. Allow the child to sit in a position that aids their breathing
3. **Give medication according to the child's care plan**
4. Watch for signs of Anaphylaxis (Difficult/noisy breathing, throat tightness, hoarse voice, wheeze/cough, loss of consciousness/collapse, pale/floppy, difficulty swallowing, swollen tongue, persistent dizziness)
5. If any of those symptoms occur - **Give Adrenaline Auto-injector**
6. **Call for an Ambulance**

## **Learning and Behaviour**

St. Edmund's Catholic Primary School recognises its duties as detailed in Section 100 of the Children and Families Act 2014. Some children with medical conditions may be considered to be disabled under the definition set out in the Equality Act 2010. Where this is the case, this school complies with its duties under that Act. Some may also have special educational needs (SEN) and may have a statement, or Education, Health and Care (EHC) plan which brings together health and social care needs, as well as their special educational provision. For children with SEN, this policy should be read in conjunction with the Special Educational Needs and Disability (SEND) code of practice.

Where necessary, and with the parent's permission, anaphylaxis will be addressed with children in the same class as the pupil in a way that they will understand. This will ensure the child's classmates are not frightened if the child has an anaphylaxis attack in class and promote the ethos of our school 'Love, Care, Share'.

## **School Environment**

St. Edmund's Catholic Primary School recognises the importance of having a school environment that supports the needs of children with anaphylaxis. There is a bed in the medical room in case a pupil needs a supervised rest following a seizure.

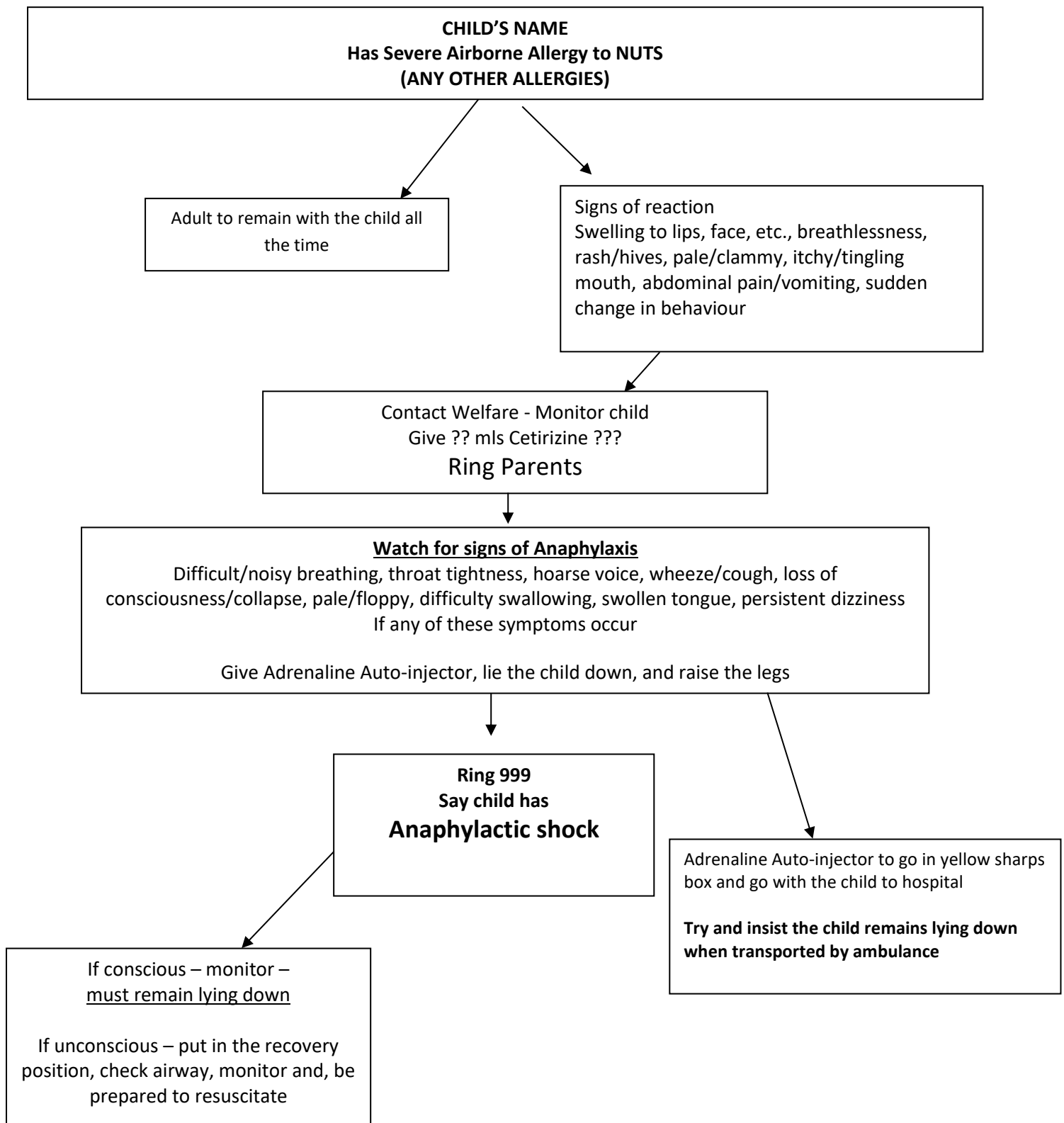
Staff will be notified of any changes in the pupil's condition through regular staff briefings. This will make staff aware of any special requirements.

In addition, a photograph and brief details of the child's condition will be placed on the school's medical board in the staffroom. Each member of staff working with the child will be given a brief action plan to follow in case of an attack (see appendix 1). The office staffs know what to do in an emergency and will ensure that the relevant phone calls are made, and relevant paperwork is made

ready for the emergency services. The above anaphylaxis policy applies equally within the school and at any outdoor activities organised by the school. This includes activities taking place on the school premises, and residential stays. Any concerns held by the pupil, parent, or member of staff will be addressed at a meeting before the activity or stay taking place

### **Offsite visits**

Standard risk assessments will be used and adapted for individuals using information from other records in line with our Education Visits Policy 2016. If deemed necessary the class teacher, parents and the SENCO will meet to discuss and complete any individual risk assessments for pupils with anaphylaxis to ensure their well-being. It is expected that children will participate in trips and that additional staffing will be identified to enable them to access their learning outside the classroom.



**Use Of school Emergency Adrenaline Auto-Injector**

**When to use:**

- **ONLY FOR PUPILS WITH A PRESCRIBED ADRENALINE AUTO-INJECTOR**
- A child having an anaphylaxis attack (Difficult/noisy breathing, throat tightness, hoarse voice, wheeze/cough, loss of consciousness/collapse, pale/floppy, difficulty swallowing, swollen tongue, persistent dizziness)
  - The school has been given parental consent (see child health care plan)
    - Child own AAI not working or not in school



- Contact Welfare
- Allow the child to sit/lay in a position that aids their breathing
- Give Adrenaline Auto-injector
- Call for an Ambulance
- Contact Parents
- The procedure may be repeated at 5-minute interval if no improvement

- Contact Welfare
- **DO NOT USE EMERGENCY AAI** (exception: Instructed by ambulance/emergency medical services)